

# MUSSO GRAND

## Accessories



**MUSSO GRAND**

**KGM**

## DECK TOP



**09AP038D23** + Color code  
MUSO GRAND DECK TOP ASSY-**DELUX FULL**



**09AP03885A** + Color code  
MUSO GRAND DECK TOP ASSY-**GRAND HALF**

## DECK TOP



**09AP03886A** + Color code  
MUSO GRAND DECK TOP ASSY-**NOBLE**



**09AP038D33** + Color code  
MUSO GRAND DECK TOP ASSY-**PREMIUM COUPE**

## DECK TOP



**09AP03889A** + Color code

**MUSSO GRAND DECK TOP ASSY-*HIGH TOP***

**NEW**

## MULTI CARGO RACK



**09APA38CLO** CARGO RACK ASS'Y - MULTI (KHAN)

**NEW**

## ROOF TOP TENT



- Closed (mm): 1,900 x 2,000 x 1,200
- Open (mm): 1,900 x 1,200 x 320
- Weight: 75 kg
- MULTI CARGO RACK (P/no: 09APA38CLO) must be installed

**09APA38RA0** ROOF TOP TENT ASS'Y –  
A TYPE ( 2 PERSON ) AFTERMARKET



- Closed (mm): 2,250 x 1,500 x 1,520
- Open (mm): 2,250 x 1,500 x 124
- Weight: 71 kg
- MULTI CARGO RACK (P/no: 09APA38CLO) must be installed

**09APA38H00** HARDSHELL ROOF TOP TENT  
(4 PERSON)

## SLIDING BED



**09APA38540**

### BED ASSY-DECK SLIDING (LONG DECK)

- *Available color: Black*
- *Specification*

Width	Length	Height	Net weight	Material	Max. Loading
1,130 mm	1,620 mm	198 mm	67 Kg	Steel	400 Kg

## SIDE STEP



**09AP038032** STEP ASSY-SIDE-LH

**09AP038034** STEP ASSY-SIDE-RH

- *Fixed type with optimal design*
- *Patterned board preventing slip & impact*
- *Net weight : 17.6 kg*
- *Size (L x W x H) : 2,106 x 202 x 246 mm*

*KBA certified : German homologation*



## SIDE STEP



**09AP038043 OFF ROAD STEP ASSY-SIDE-LH**  
**09AP038044 OFF ROAD STEP ASSY-SIDE-RH**

- *Fixed type with optimal design*
- *Patterned board preventing slip & impact*
- *Net weight : 13.4 kg*
- *Size (L x W x H) : 2,105 x 200 x 100 mm*

# DOOR GARNISH



**09AP0386DS**

**DOOR GARNISH SET\_Q215 & 250**

**[FRT & RR LH/RH ALL Included]**

<b>09AP0386DS</b>	<b>SET [FRT &amp; RR LH/RH]</b>
09AP0386D1	DOOR GARNISH-FRT LH
09AP0386D2	DOOR GARNISH-FRT RH
09AP0386D3	DOOR GARNISH-RR LH
09AP0386D4	DOOR GARNISH-RR RH

## TAIL GATE GARNISH



**09AP0388LS TAIL GATE GARNISH\_LONG DECK**

Before installation



## REAR SKID PLATE



**09AP038200** PLATE ASSY-RR SKID

- *Available color: Silver*

# FENDER FLARE

## FENDER FLARE FRONT & REAR



- Qualified Plastic Fender Flare for Musso and Musso Grand
- Note: On front fender 'REXTON' engraved



### 09AP138S20 FENDER FLARE[SET] – LONG DECK

- Vehicle sign off date: Jan 3, 2019 ~ Aug 26, 2019

### 09AP138S40 FENDER FLARE[SET] – 19M/Y(UREA) LONG DECK

- Vehicle sign off date: Aug 26, 2019 ~ (For Q200 only)

★Fender design change★

From 2018/10/03 to 2019/08/26 P/N 09AP138S00, 09AP138S20 (oil cap: circle type)

After 2019/08/26 – for Q200 P/N 09AP138S30, 09AP138S40 (oil cap: square type)

## ALLOY PEDAL



**09APA36040**

**PEDAL ASSY-ALLOY (SPORTS)**

- *Material: Stainless steel*
- *LHD vehicle only*
- *Available color: Silver*

## REAR SEAT UNDER TRAY



**09APA38118**

**REAR SEAT UNDER TRAY**

## UNDER COVER



### 09AP038046E UNDER COVER

- *Under body protection from off-road*
- *Vehicle dress-up effect*
- *Material : SS41, Thickness : 3T*
- *Size (L x W x H) : 938 x 806 x 109 mm*
- *Net weight : 10kg*



## UREA TANK COVER



**09AP03810AE**

**COVER ASSY-UREA TANK**

- *Material: Steel*

## REAR STEP



### **09AP03809L** STEP ASSY-RR BUMPER L/DECK

- *Convenient step to deck with simple folding & unfolding*

## DECK COVER ASSY-FLAT

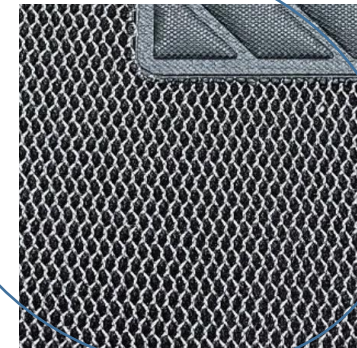


**09APA38175** DECK COVER ASSY-FLAT LONG

## MESH MAT



- *3D Mesh mat*
- *Mounting on 1st & 2nd row*
- *Material: Polyester & nylon*
- *Easy cleaning*
- *Strong durability with polyester & nylon*



**09APA38M30** SERVICE MAT ASSY-MESH

## 3D MAT



**09APA38M00** 3D CAR MAT-CAB IN



- *Application of TPV material harmless to human body*
- *Non-slip safety function*
- *Easy to detach and wash/dry*

## MULTI UTILITY BOX



**09AP038B10**

### MULTI UTILITY BOX

- Available color: Black
- Decktop, Roll-bar, Sliding bed cannot be installed together

Width	Length	Height	Net weight
1,540 mm	580 mm	560 mm	25 Kg

## DECAL FILM



**09AP038051**

### DECAL-4X4 DINAMIC [SET]

- LH & RH 1 SET

## WHEEL ARCH GARNISH(SET)



**09AP0387LS** WHEEL ARCH GARNISH(SET)\_LONG DECK\_Q215 & 250

# BLOW MANAGER-AIR CONDITIONER

## 09APA3AB00 BLOW MANAGER-AIR CONDITIONER



- *Air conditioner moisture dryer*
- *When operation is stopped, mold formation & odor will be reduced automatically removing moisture from air conditioner*
- *Voltage ; DC 12V,*
- *Overheating, Overdischarging, overcurrent prevention function*
- *Size ; 81.6 x 108.5 x 33.3 mm*





## AIR PURIFIER

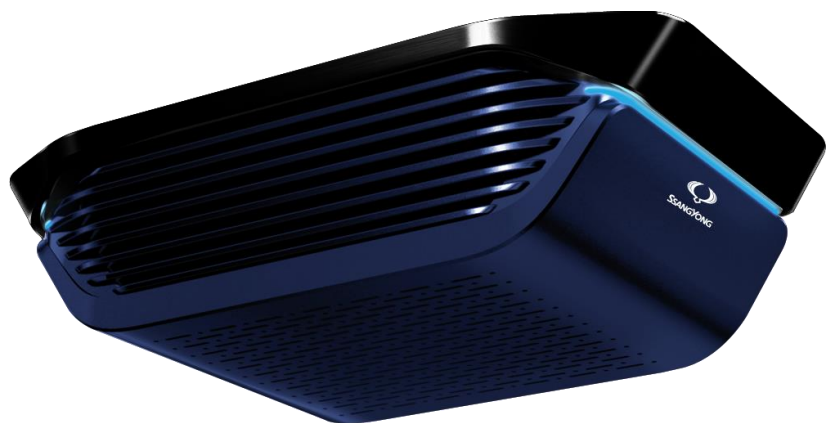


**09APA38AP0 AIR PURIFIER-ARMREST (MOQ 5 pcs)**

**09AP036AF0 FILTER-AIR PURIFIER-ARMREST(MOQ 20 pcs)**

- *Indoor air purification and odor deodorization*
- *4-layer H13 HEPA filter applied and real-time air quality check*
- *Ultra-fine dust removal rate of 2.5 microns or less 99.85% per hour*
- *Formaldehyde removal rate 99.45% per hour*
- *Filter replacement cycle : 500 ~ 520 Hours*
- *4-level air volume control function & low noise design*

# AIR PURIFIER



**09APA3AHP0** AIR PURIFIER-HEADLING

**09AP03AHF0** FILTER-AIR PURIFIER-HEADLING

- *Applicable to all models*
- *Indoor air purification and odor deodorization*
- *5-layer H13 HEPA filter applied*
- *Indoor air purification for 10 minutes*
- *Low noise (30-45dB)*
- *In-vehicle air quality LED can be checked (4 levels)*

## DOOR SPOT LAMP



### 09APA38300 LAMP ASSY-DOOR SPOT [SET]



- *LED logo **Rexton Sports***
- *Obstacle check function on floor before getting in the car*
- *Vehicle dress-up effect*
- *Wiring & connector for door spot lamp(x2) includes*

## LED DOOR SCUFF LAMP



### 09AP038660 TRIM ASSY-FRT LED DOOR SCUFF [SET]

- *Battery replacement type, no wiring work required*
- *Interior items with white lighting made of stainless steel*
- *Battery(CR2430) replacement cycle ; 2 years*



## 3D DECK MAT



### 09AP038M20 3D DECK MAT-LONG DECK

- *Application of TPV material harmless to human body*
- *Non-slip safety function*
- *Easy to detach and wash/dry*

## ROLL BAR

WILD & WILD laser cut



### 09AP038520EXP ROLL BAR-MODERN (Long Body)

Width	Length	Height	Net weight
1,736mm	1,630mm	550mm	30Kg

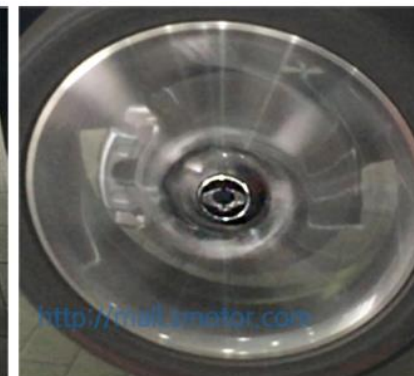
- Available color: Black
- Pipe Material : SS41 (Thickness 2T / 60.5ø)
- Others Material : SUS (Bracket, Panel)
- "Wild & Wild" Laser Cut

## SPINNING WHEEL CAP



**09AP034H00B** SPINNING WHEEL CAP (SET\_4PCS)

**09AP034H00** SPINNING WHEEL CAP (1 PCE)



# ITEM LIST



No	GROUP	PART NO	PART NAME	REMARK
1	MUSO GRAND DECK TOP (with color code)	09AP038D23	DECK TOP ASSY-DELUX FULL	With color code
		09AP03885A	DECK TOP ASSY-GRAND HALF	With color code
		09AP03886A	DECK TOP ASSY-NOBLE	With color code
		09AP038D33	DECK TOP ASSY-COUPE	With color code
		09AP03889A	DECK TOP ASSY-HIGH	
2	SLIDING BED	09APA38540	BED ASSY-DECK SLIDING	
3	SIDE STEP	09AP038032	STEP ASSY-SIDE-LH	KBA certified : German homologation
		09AP038034	STEP ASSY-SIDE-RH	
		09AP038043	OFF ROAD STEP ASSY-SIDE-LH	
		09AP038044	OFF ROAD STEP ASSY-SIDE-RH	
4	GARNISH	09AP0386DS	DOOR GARNISH SET [FRT & RH LH/RH]	
		09AP0388LS	TAIL GATE GARNISH-LONG DECK	
		09AP0387LS	WHEEL ARCH GARNISH(SET)_LONG DECK_Q215 & 250	



# ITEM LIST

No	GROUP	PART NO	PART NAME	REMARK
5	FENDER FLARE	09AP138S20	FENDER FLARE[SET]-LONG DECK	Vehicle sign off date: Jan 3, 2019 ~ Aug 26, 2019
		09AP138S40	FENDER FLARE[SET]-19M/Y(UREA) LONG DECK	Vehicle sign off date: Aug 26, 2019~for Q200
6	INTERIOR	09APA36040	PEDAL ASSY-ALLOY (SPORTS)	LHD vehicle only
		09APA38118	REAR SEAT UNDER TRAY	
		09APA38M00	3D CAR MAT-CAB IN	
		09APA38M30	SERVICE MAT ASSY-MESH	
7	EXTERIOR	09APA38M20	3D DECK MAT (LONG DECK)	
		<b>NEW</b> 09APA38CLO	CARGO RACK ASS'Y - MULTI (KHAN)	
		09AP038520EXP	ROLL BAR-LONG BODY MODERN	
		09AP038046E	UNDER-COVER	
		09AP03810AE	COVER ASSY-UREA TANK	
		09AP034H00	SPINNING WHEEL CAP	
		09APA38175	DECK COVER ASSY-FLAT LONG	

# ITEM LIST

No	GROUP	PART NO	PART NAME	REMARK
8	ELECTRICAL	09APA3AB00	AFTER BLOW-AIR CONDITIONER	
		09APA38AP0	AIR PURIFIER_ARMREST	
		09AP036AF0	FILTER-AIR PURIFIER_ARMREST	
		09APA3AHP0	AIR PURIFIER_HEADLINING	
		09AP03AHF0	FILTER-AIR PURIFIER_HEADLINING	
9	CAMPING	 09APA38RA0	ROOF TOP TENT ASS'Y – A TYPE ( 2 PERSON ) AFTERMARKET	
		 09APA38H00	HARDSHELL ROOF TOP TENT (4 PERSON)	
10	STORAGE	09AP038B10	MULTI UTILITY BOX	
11	DECAL FILM	09AP038051	DECAL-4X4 DINAMIC [SET]	
12	REAR STEP	09AP03809L	STEP ASSY-RR BUMPER L/DECK	
13	REAR	09AP038200	PLATE ASSY-RR SKID	